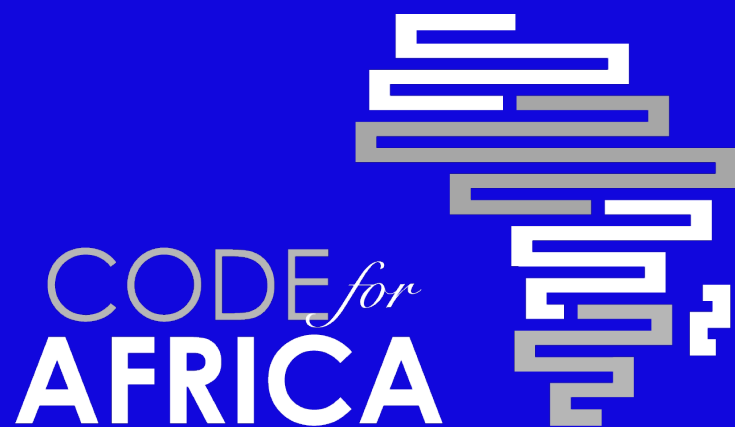


The Data Continent

Code for Africa and data-driven journalism



@ChrisRoper

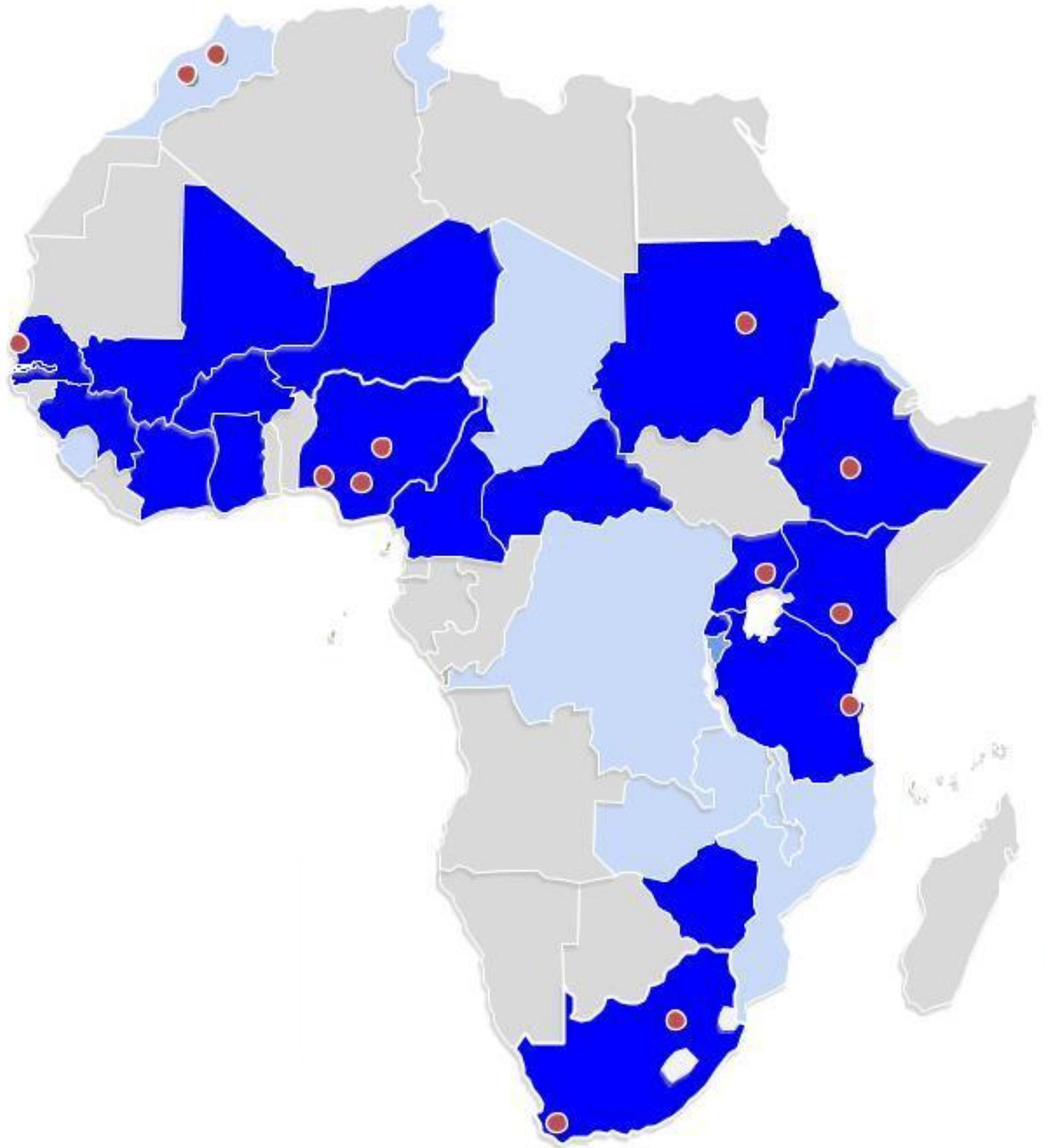
Chris Roper

- Chris Roper is deputy CEO for Code for Africa, and a director for the African Network of Centres for Investigative Reporting.
- Prior to joining CfA, Chris was editor-in-chief of the Mail & Guardian, and editor-in-chief of Africa's largest online publisher, 24.com.



Continental Footprint

- Africa's largest **indigenous network** of civic technology labs
- Underpinned by **78** full-time staff (analysts, technologists, & digital creatives) in **18** African countries.
- Major data and digital journalism projects in a further **11** countries
- A sister network of independent investigative newsrooms in **22** countries



1 KATI YA 5 HUATHIRIKA
TUPINGE NDOA ZA UTOTONI

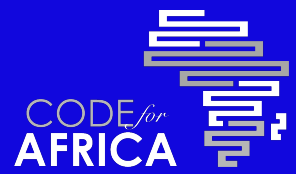
WhatsApp: +255677045957 : Da Asha B...

SMS: +255677045957



100+ Projects

Our portfolio ranges from cutting edge forensic data & fact-checking initiatives to graphic journalism and multimedia tools, including data graffiti, supported by civic bots and forensic data analysis with a raft of digital security tools for investigative newsrooms.





GETTINGTHESTORY

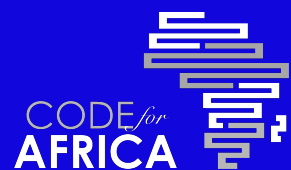
NEWS GATHERING

Seed Funding

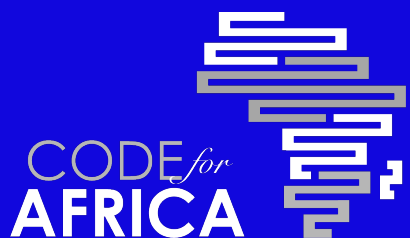
Innovation isn't cheap. We **neutralise** some of the initial **risk and cost** by offering fast-track **seed grants** and **technical support** for **proof-of-concept** experiments with **leapfrog technologies** or new **audience strategies** and **revenue models**.



People Power



We don't parachute in. Our teams are in-country and understand local context. We build dynamic **ecosystems** and **community** networks to ensure partners have **local talent**. Our deep local roots also help amplify **local impacts**.



Our Reality

We're **realistic about data** availability: this is the Kenyan Land Registry. Half our job is digitising these kinds of **deadwood records** to give both newsrooms and citizens **accessible + actionable information**.

Does It Work?

Examples of data-driven civic engagement impacts



LATEST #MINEALERT INVESTIGATIONS



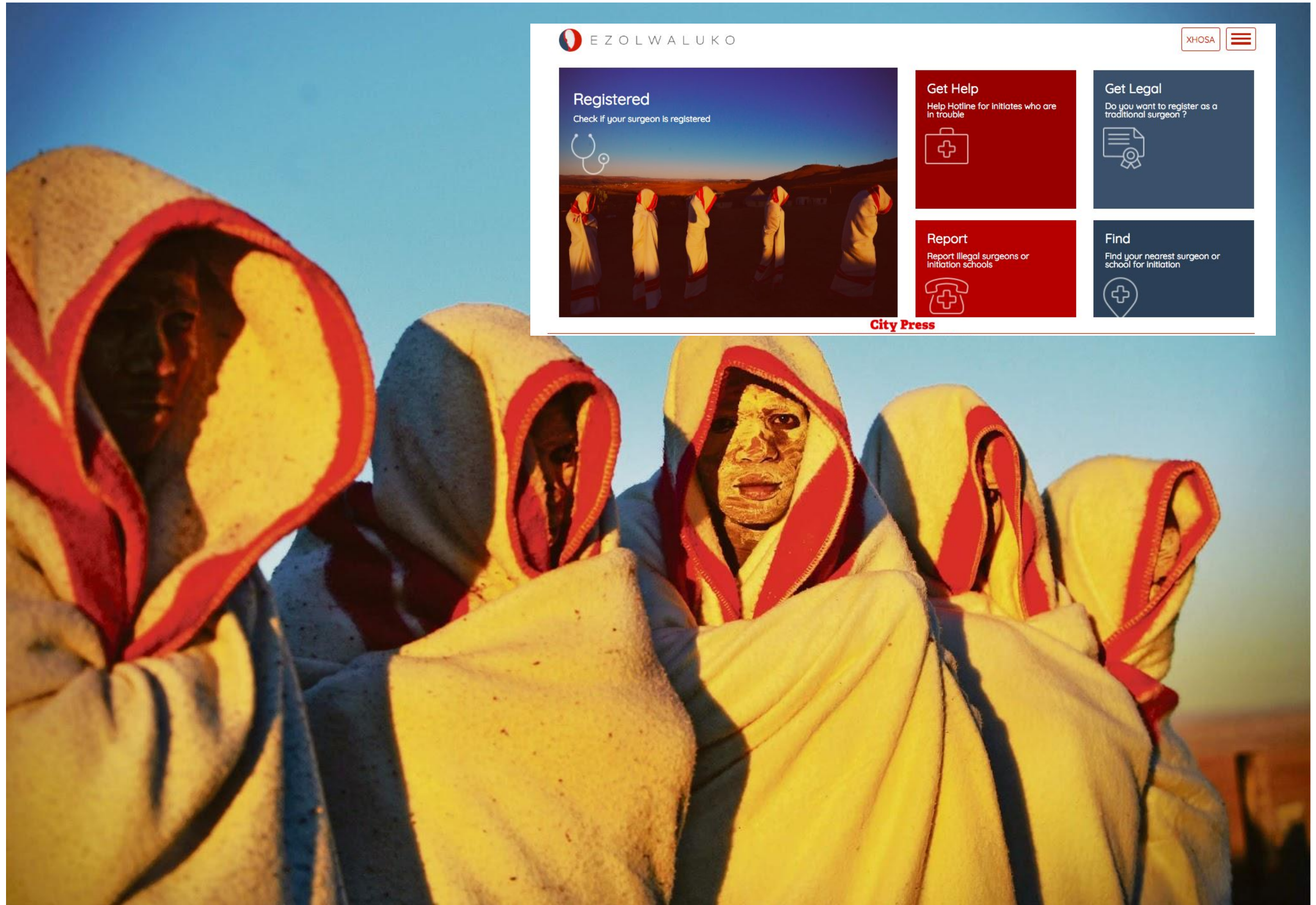
Parliament probes Mintails toxic legacy

Parliamentary committee asks for explanations following Oxpeckers



TOOLS





Registered

Check if your surgeon is registered



Get Help

Help Hotline for Initiates who are in trouble



Get Legal

Do you want to register as a traditional surgeon?



Report

Report illegal surgeons or initiation schools



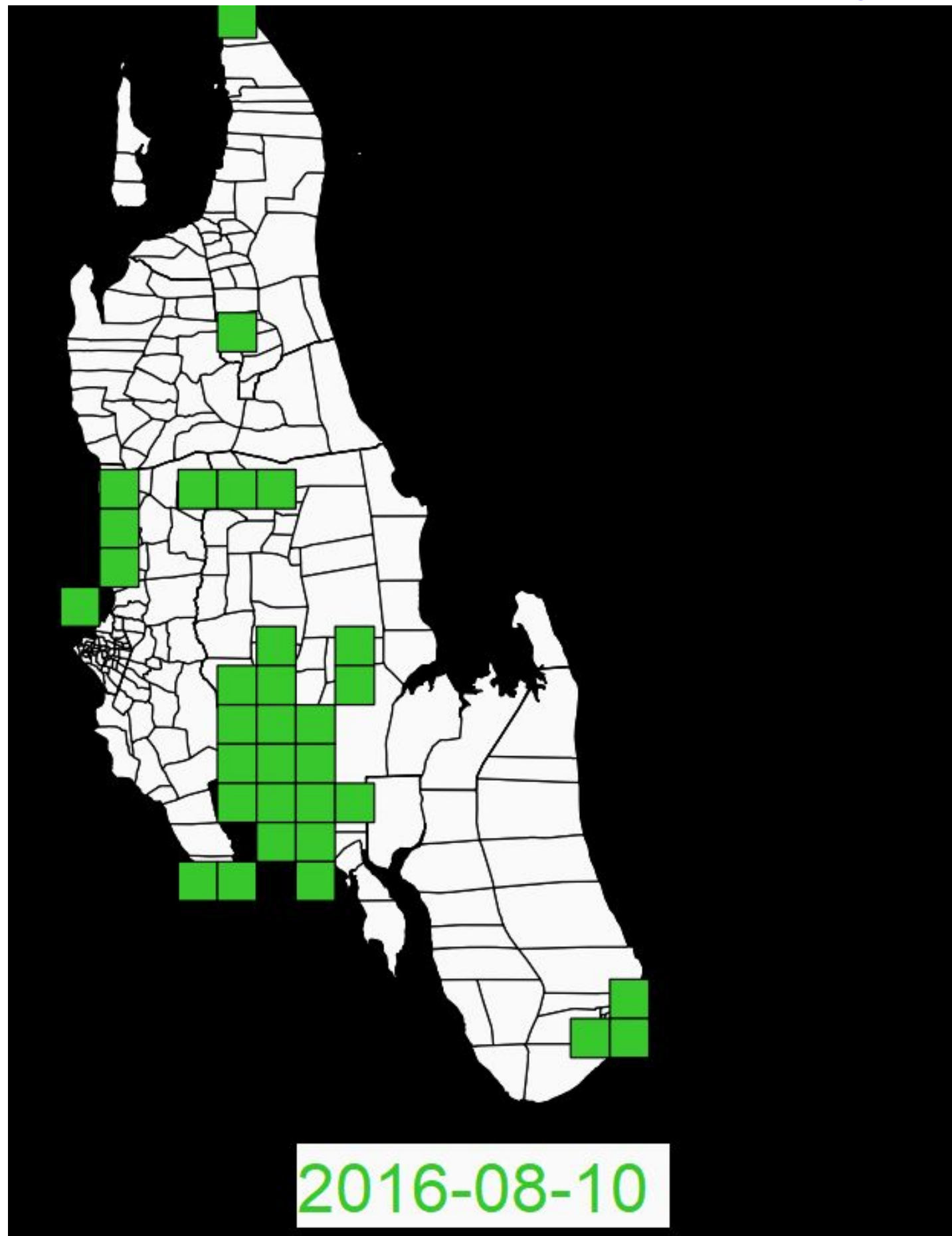
Find

Find your nearest surgeon or school for initiation



City Press





PUTTING NIGERIA'S FLOATING SLUM ON THE MAP



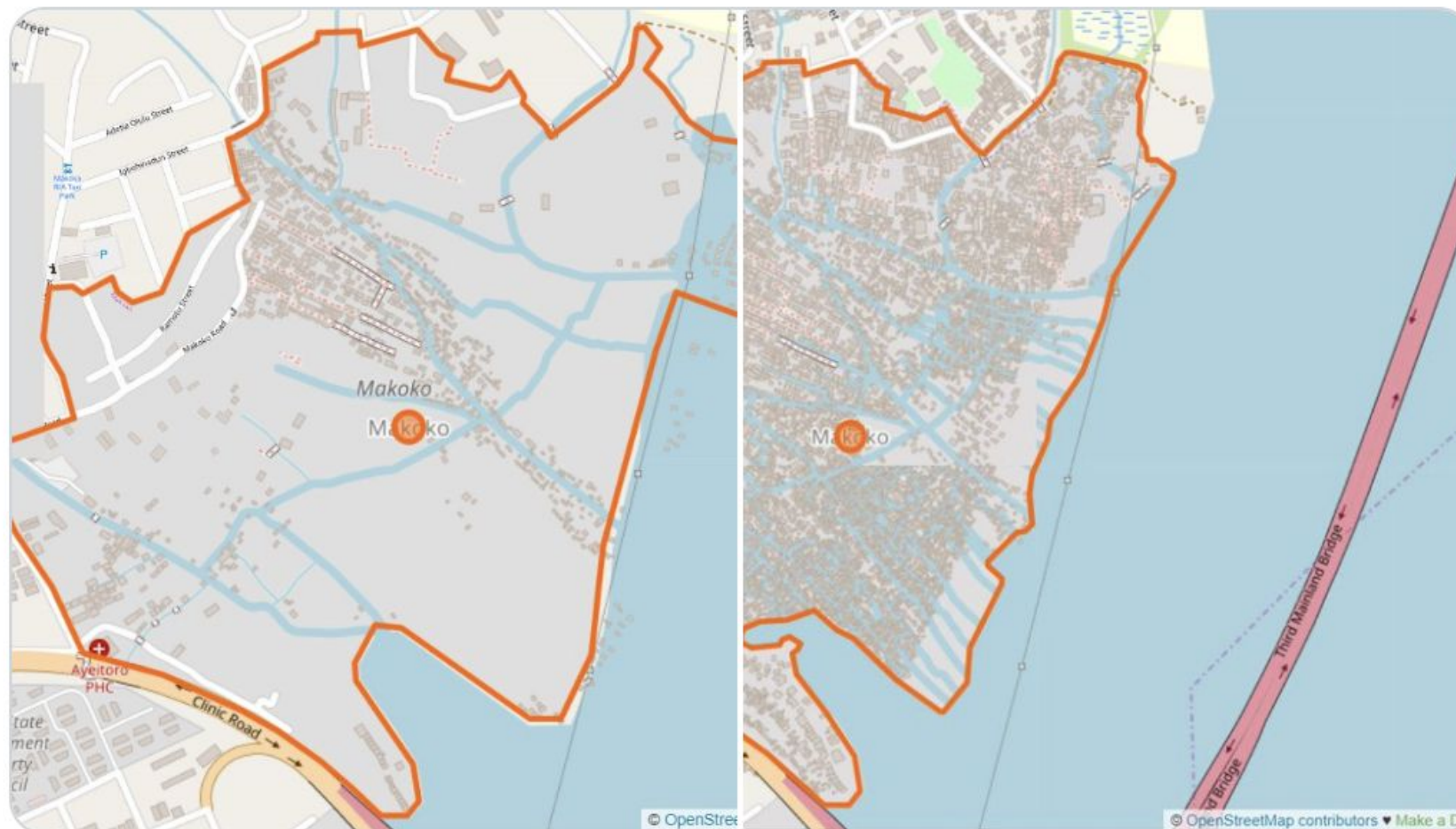
OpenStreetMap NG
@OSMNigeria



Before and after pictures of Makoko, Lagos, Nigeria in just one week!!!

The amazing power of crowdsourcing, Opensource and OSM.

[#MapMakoko](#) [#OSMGeoweeek2019](#)



3:31 AM · Nov 18, 2019 · [Twitter for Android](#)

81 Retweets **225** Likes

The Miners of Mozambique

Who are the people behind the mining industry in Mozambique? A partial answer can be found by connecting minerals concessions to the people who control the licensed exploration and mining companies.

Warning: this graphic is currently based on unverified concessions and company control data from on-line sources. Please be sure to independently verify any linkages before citing this page.

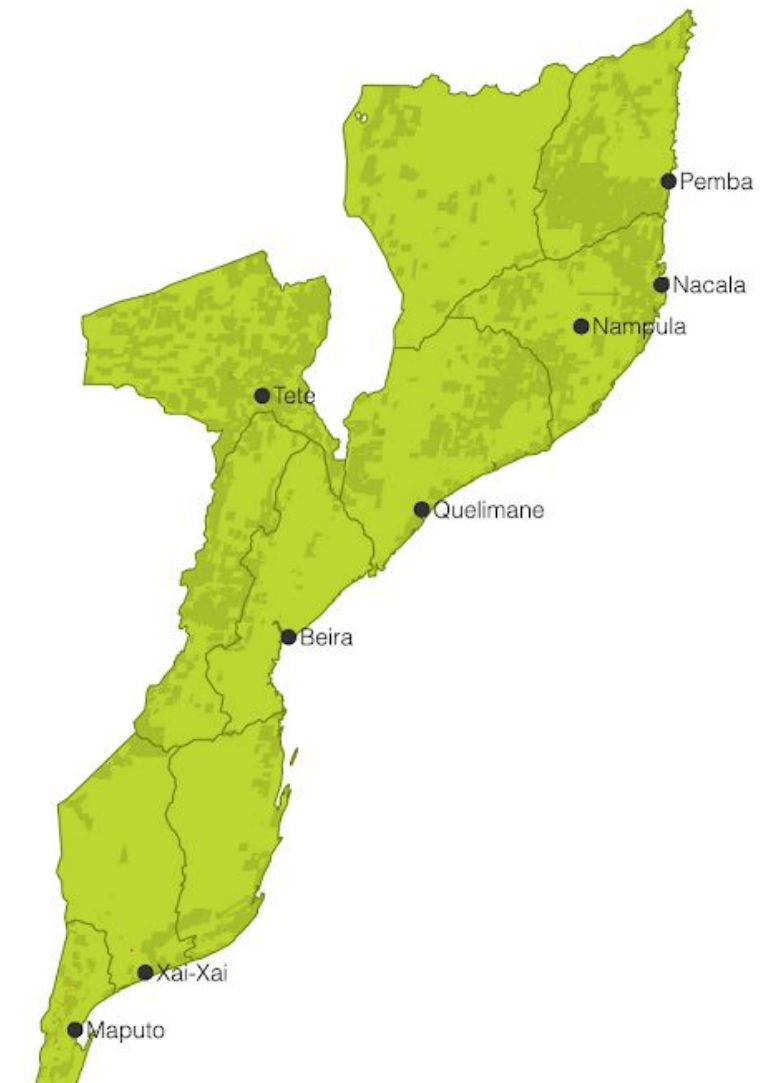
PEOPLE

Cong Chuanyou	164
Tao Wu	136
Nicholas John Gore Graham	106
Nicolas John	96
Bo Hu	80
Faisal Kedairy	77
Matthew Giles Yates	68
Robert Arthur Behets	63
Peter John Christians	63
Panagiotis Efstatiou	63
Gregory James Sheffield	59
Hui Sun	53
Mariano de Araújo Matsinhe	51
Francisco António Xavier dos Santos	51
Peter John Prickett	51
Egidio Lúcia Caetano José Madeira	49
Zhiyong Xu	46
Hong Ye	39
Cláudio Manuel Loureiro de Nogueira	38
Gary Denham Seabrooke	37

COMPANIES

Rovuma Resources, Limitada	96
Omegacorp Minerais, Limitada	63
Administracao Nacional de Estradas	60
Africa Great Wall Cement Manufacturer, Limitada	57
Vale Projectos e Desenvolvimento Moçambique, Limitada	52
ZAMEX - Zambeze Explorações, Limitada	51
Africa Yuxiao Mining Development Company, Limitada , Cong Chuanyou	47
Cimentos de Moçambique, S.A.R.L.	44
Lalgi Maugi	43
Hong Ti Mineral, Limitada	39
Capitol Resources, Limitada	38
África Great Wall Mining Development Company, Limitada	37
Empresa Moçambicana de Exploração Mineira, SA	37
Vale Moçambique, Limitada	33
Rachana Global, Limitada	33
HS Mining, Limitada	31
Escola de Condução ABC, Limitada	31
África Consultoria & Projectos, Limitada	29
DH Mining Development Company, Limitada	29
Siexno. I Limitada	28

CONCESSIONS



Research + Data

Fact checking

Investigations

Training

Data-driven content

CivicSignal

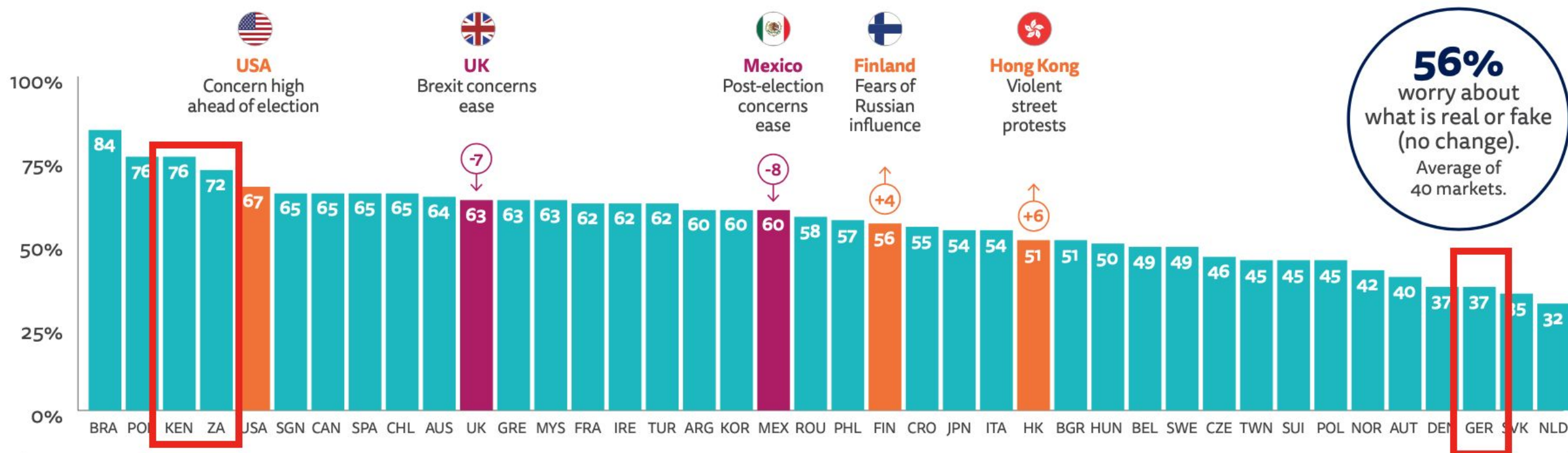
PesaCheck

ILab

Academy

WanaData

PROPORTION CONCERNED ABOUT WHAT IS REAL AND WHAT IS FAKE ON THE INTERNET WHEN IT COMES TO NEWS – ALL MARKETS



Q_FAKE_NEWS_1. Please indicate your level of agreement with the following statement. Thinking about online news, I am concerned about what is real and what is fake on the internet. Base: Total sample in each market ≈ 2000, Taiwan = 1027.



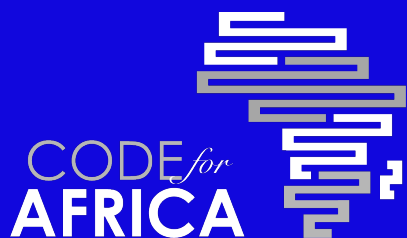
Media Cloud is an open-source platform for media analysis.

Topic Mapper

Dive deeply into coverage of an issue by collecting more stories, analyzing influence, and slicing and dicing the stories to discover narratives.

Explorer

Get a quick overview of how your topic of interest is covered by digital news media by exploring attention, language, and entities.



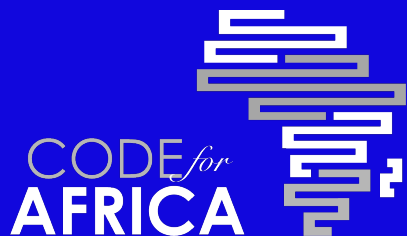
CivicSignal

Code for Africa's research team, implementing, conducting and publishing research projects focused on African media ecosystems.



Decoding the numbers that shape our world

Citizens need accurate information to make decisions. PesaCheck is a fact-checking initiative to verify often confusing numbers quoted by public figures across East Africa, supported by International Budget Partnership and Code for Africa affiliates in Kenya, Tanzania & Uganda.



PesaCheck

Code for Africa's pan-African
fact-checking initiative



iLAB Featured Dossiers.

ANCIR partners with investigative newsrooms to produce data-driven investigative reports using social network analysis, entity analysis and open source intelligence.

ONLINE POLITICAL TROLLS



Political trolls

COVID-19 LOCKDOWN PACKAGE SCAM

Covid-19 Lockdown Relief Package Scam

How users in African countries are scammed into sharing their banking information during the Covid-19 lockdown period



Covid-19 package scam

ETHIOPIA'S HACKTIVISM



Ethiopia's hacktivism

Join us in
CASABLANCA
Morocco

[REGISTER \(EN\)](#)[REGISTER \(FR\)](#)

Improve your digital storytelling
with a combination of online webinars and face-to-face training in:



News Gathering



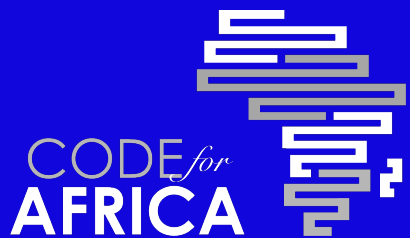
Storytelling



Engagement



Sustainability

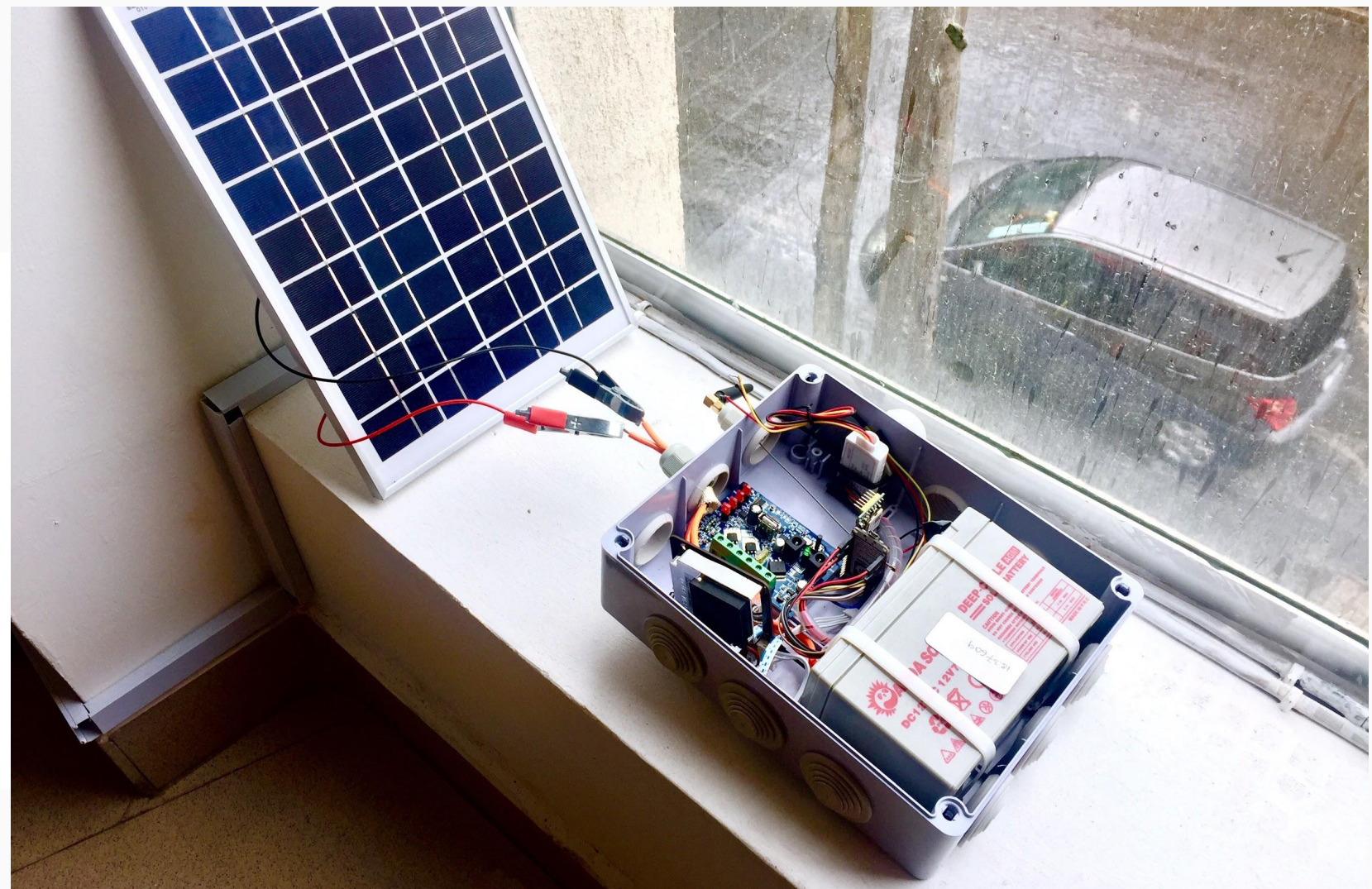
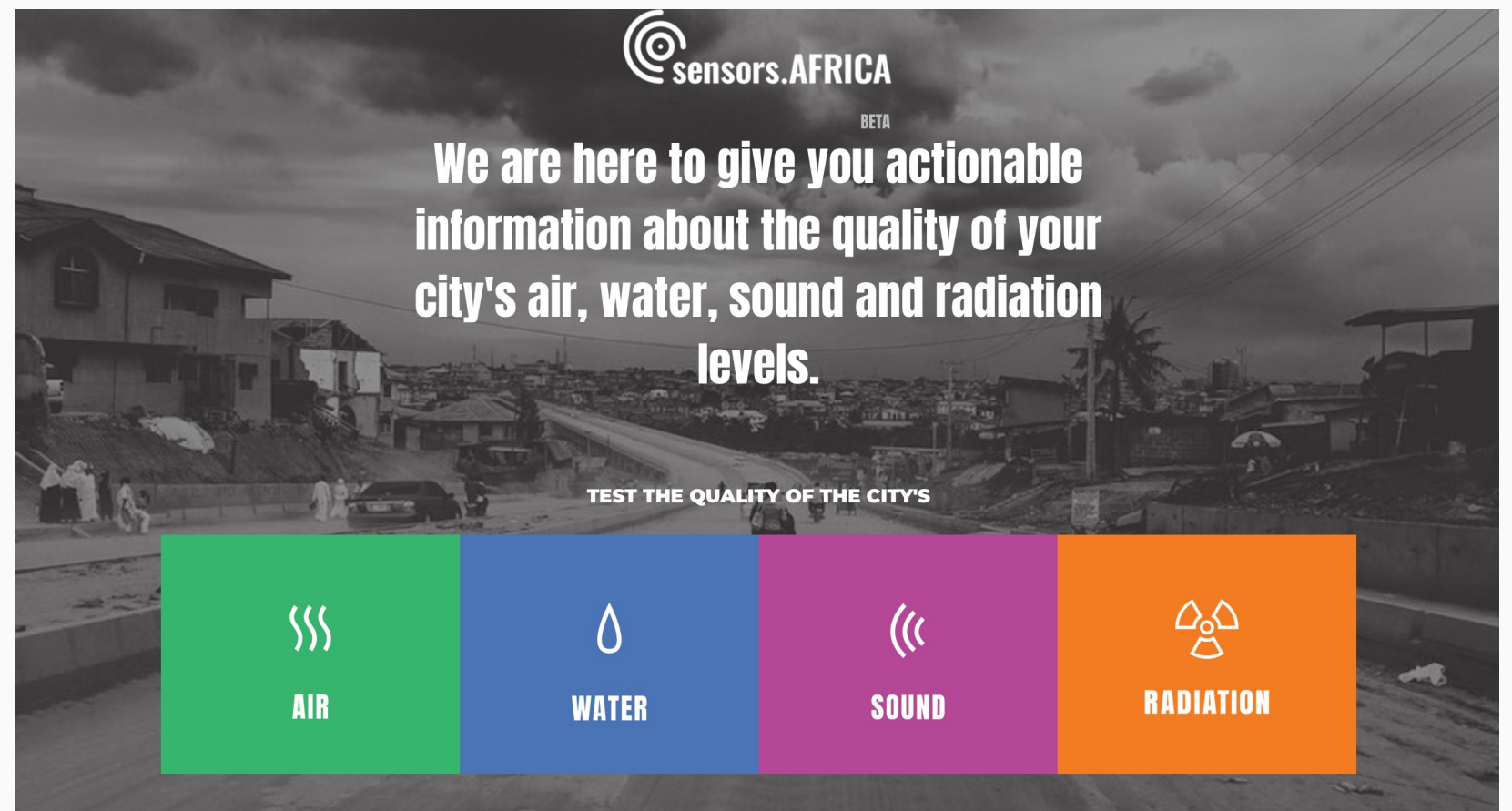


Wanadata

A Pan-African network of female data scientists, journalists and technologists working to change the digital media landscape by producing and promoting data-driven news.

Sensors. Africa

- We support deployment of revolutionary new digital sensors and advanced algorithms that provide citizens with real-time alerts while also producing analytical data.
- Our labs currently support sensors that focus on outbreaks of cholera or other waterborne diseases, as well as when air / sound pollution exceeds safe limits.



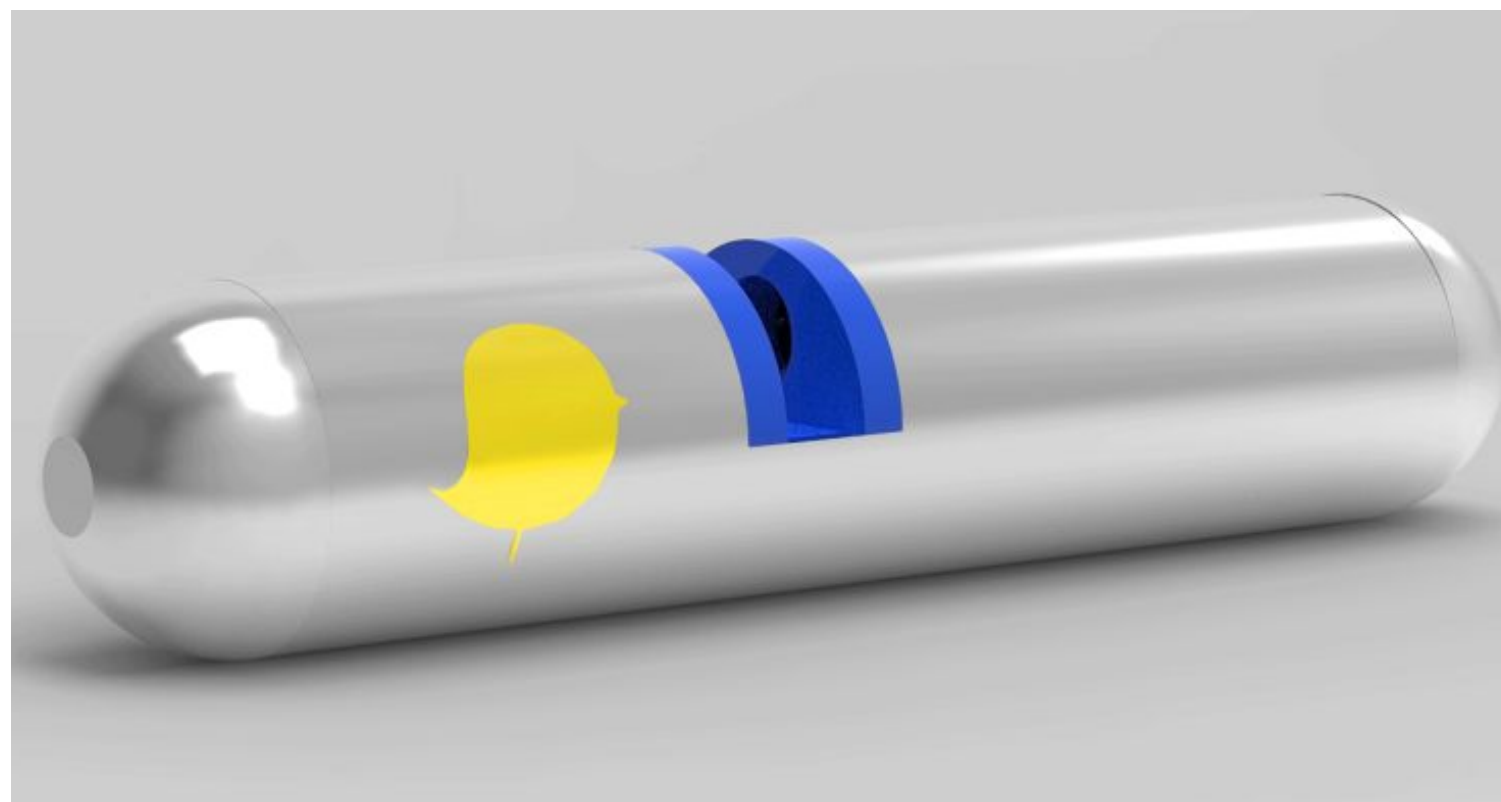
THE AIR POLLUTION IN NAIROBI, KENYA

WHO Guideline (10)
Lowest level at which
premature mortality
increases in response to
long term exposure



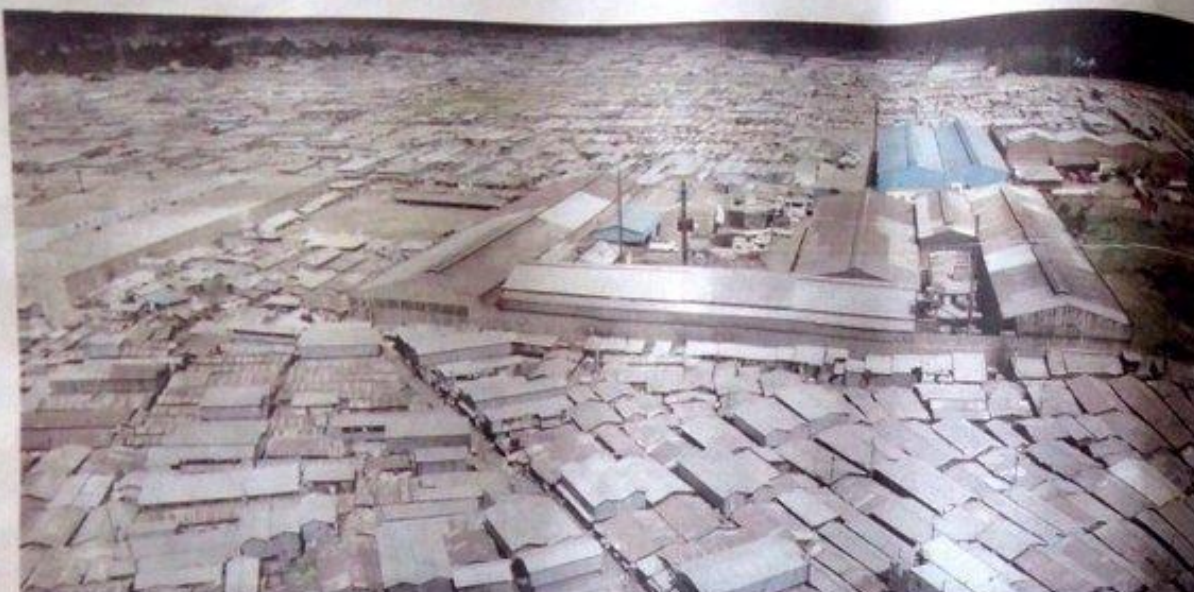
*PM_{2.5} concentrations
measured in micrograms
of particles per cubic
meter of air (µg/m³)

Data: WHO Global
Platform on Air Quality &
Health





BIG READ / DEADLY AIR



Aerial view of a school sandwiched between Divan and Accurate Steel Mills industries in Mukuru kwa Reuben slum / AFRICA DRONE

MUKURU FUMES PUT 60 ASTHMA PATIENTS A MONTH IN HOSPITAL

Residents are up in arms over pollution from nearby factories. Dozens suffer respiratory tract infections, including pupils whose learning ability is also impaired

PATRICK VIDUA
@viduapatt



As we wait to be let into Maendeleo Learning Centre, smoke drifts over from the chimney of a factory next door. The smoke engulfs the school's bare desks and pollutes the classroom, where the last lesson of the day is in progress.

Whether inside or outside class, the children and teachers have no way of escaping the smoke and the white dust particles that settle everywhere, causing a burning itch to the skin.

"What can we do? They need to finish their syllabus before the school year ends," a teacher says.

Obvious to the smoke and dust, some of the children play in the dusty playground. Others walk to the toilet blocks, which share a wall with the factory and bear the brunt of the fumes emitted from the factory.

The school in Mukuru kwa Reuben slum, off Enterprise Road, has 275 pu-

pils, ranging from baby class to high school. It is nestled in between two factories: Bhachu Industries Limited and its subsidiary, Accurate Steel Mills. Residents have time and again complained to the authorities about the noxious air coming from the factories.

HEALTH EFFECTS

Lucas Maita, who has lived in Kwa Reuben for 28 years, says he and other residents are worried about their health and that of their children. They have no option but to stay in the settlement.

"I have worked for Bhachu in the past. At the end of the day you have to put food on the table. If you complain about your welfare, the following day you can't step foot near the factory. So you just keep quiet," he says.

Mwendu (not her real name) says she has lived in Kwa Reuben for eight years. She worries for her two children, and especially about her husband, who works for Bhachu.

"He struggles to breathe," she says, adding, "He suffers from a congested

chest, and this has been getting worse over the years. Our hands are tied because that is where we get our daily bread."

Elijah Gachuki is the CEO at Mukuru Kwa Reuben Clinic. He sees up to 40 patients a day on average, all with respiratory tract infections and ailments. Gachuki attributes the poor health outcomes of the community to the large volumes of pollution from gases emitted by nearby industries.

Talking to the Star, he said, "Most of the patients we see have upper and lower respiratory tract infections. In some cases, they complain of severe chest pain. We are usually unable to deal with the more extreme of these cases, so many are referred to Mama Lucy Hospital, Mbagathi District Hospital and Kenyatta National Hospital."

Gachuki blames most of the respiratory tract infections on allergens caused by gas and dust emissions. "Currently, we have about 60 asthmatic patients monthly at our TB clinic," he says.

He says the factory has yet to come up with proper waste disposal mechanisms to stop the dust and gas emissions from continuing to endanger the lives of the community, and particularly children.

"For us to guarantee these young ones a brighter future, we need to seriously look at how to mitigate this air pollu-

tion," Gachuki says.

An article in the Guardian newspaper in August 2018 highlights the effects of air pollution on people's intelligence. The article, based on research conducted in China, found that high pollution levels led to significant drops in test scores in language and arithmetic, with the average impact being having lost a year of the person's education.

Other reported studies have linked toxic air to extremely high mortality in people with mental disorders, while another analysis found that people living near busy roads had an increased risk of dementia.

Apart from studies that have shown air pollution to cause premature deaths globally, scientists have found the first evidence that particles of air pollution travel through the lungs of pregnant women's lungs and lodge in their placenta. This in a study conducted in London, UK, involving mothers living in the city.

HIGH POLLUTION LEVELS

Following the complaints, the Star, in partnership with Code for Africa, set out to set up air quality sensors in the Kwa Reuben village to measure the quality of the air residents were being exposed to.



A water tank at Maendeleo Learning Centre caked in emissions / AFRICA DRONE

"The residents are also able to trace readings from the sensors to show measures to improve the air quality. The sensors, AFRICA projectors set up in Mukuru Kwa Reuben at 100m, 330 meters from Accurate Steel Mills, a subsidiary of Bhachu Industries Limited.

The readings from 330m away were high, and we were there to see what the sensors would tell us about pollution closer to the factories.

The data collected by the air quality sensors confirmed the residents' claims that the factories regularly release emissions between 2pm and 4pm. Using the World Health Organisation Air Quality guidelines, the data showed that over a seven-day period with data collected over 24hrs, residents living around the sensor at Reuben PM were seeing Particulate Matter (PM) that was higher than the WHO-mandated levels over a 24-hour period, four days of the week.

The values were so high, despite being over a quarter of a kilometre away from the factory. The Code for Africa team went on to walkabout with readings with a portable sensor close to the factory.

Our first reading at Maendeleo Learning Centre at 2:55pm was 244 PM₁₀/m³ for PM₁₀, well above WHO

HE SUFFERS FROM A CONGESTED CHEST AND IT'S BEEN GETTING WORSE. OUR HANDS ARE TIED BECAUSE THAT IS WHERE WE GET OUR DAILY BREAD - FACTORY WORKER'S WIFE

quality standards. The factory with the chimney emitting to the right of the school was identified as Divan, but that could not be substantiated. In chimney is visible lower than the prescribed Nema guidelines, which is 40m high from the tallest building in the neighbourhood.

NEMA RESPONSE

Other two factories highlighted as major pollutants in the Reuben neighbourhood of Kwa Reuben, Accurate Steel Mills has been positively identified.

The factory, which has been in operation since 1997, co-existed with the residents until mid-2016. Speaking to the Star, Karen (who did not want her real name used) said the factory did not have the levels of pollution it emits today.

"They were okay. The chimneys took the air up high into the air. But now the smoke comes down through gaps in the factory's wall, between corrugated sheets and the stone wall," she said.

Karen showed us into her home, which is directly in the shadow of Accurate Steel. "The smoke is very heavy at certain times, and is accompanied with a white powder that settles on all surfaces and seems corrosive to metal. The factory has chimneys but the emissions are seen to seep through the corrugated iron top sheets of the factory's wall," she said.

Seed production and treatment processes have been shown to have significant impact on the natural environment. The major releases of pollutants to air and water include carbon dioxide and nitrogen oxides and sulphur dioxide.

Due to forced in most of the steel industry's processes, the particles from the nitrogen and sulphur oxides are smaller than 2.5 micrometres. They are easily inhaled into the lungs and absorbed directly into the bloodstream.

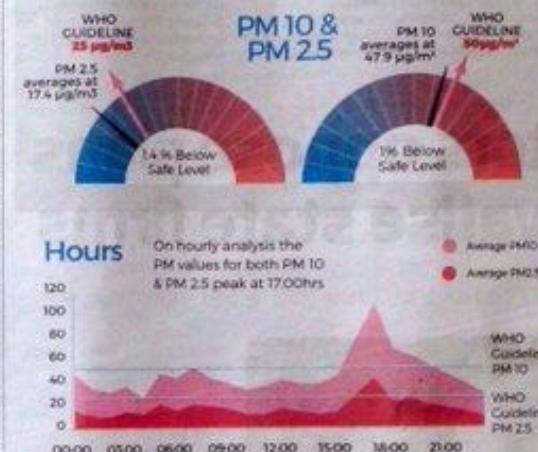
Nema environmental chemist Bryan Ngunjiri said following latest assessments of the Bhachu factory, they had directed the company to raise its chimneys from 20m to at least 50m to increase the dispersion rate of the waste gases.

Additional recommendations include installing fabric filters to reduce emission of fine dust particles, using electrostatic precipitators that can tremendously minimise the emissions of sulphur and nitrogen oxides and carbon dioxide.

On how these regulations are being enforced, Ngunjiri said, "We have so many papers on policies and regulations on place, but enforcement and execution remains a nightmare. When you go to the ground, you realise very little is being done."

Adding, "Enforcing these regulations is not a one-off idea. It should be continuous, and if those in charge can replace their minds to ensure both the government and factories follow the law, we can reduce the unfortunate situation that the people in Kwa Reuben find themselves in."

Ngunjiri urged factories to adopt modern technologies to help them manage their emissions.



Health Fears

"Most of the patients that we see have upper & lower respiratory tract infections. In some cases they complain of severe chest pain. We are usually unable to deal with the more extreme of these cases so many are referred to Mama Lucy Hospital, Mbagathi District Hospital & Kenyatta National Hospital."



Daily Averages



Mobile Sensor



STEEL MILL ON THE SPOT

We emit no smoke and have Nema approval - factory director

Bhachu Industries boss says gas is trapped by converters they installed

BY PATRICK VIDUA (@viduapatt) Mukuru kwa Reuben slum residents have long complained of chest pains and asthma. They blame it on gas and dust emissions from a subsidiary of Bhachu Industries Limited, Accurate Steel Mills. However, the management of Bhachu denied the allegations.

Company director Guyver Bhachu said, "I can confirm that we have all our factories, which are in accordance with international standards."

Adding, "Both Nema and City Hall are aware of our existence, what we produce and the gases we emit. This is why we furnish them with environmental monitoring reports that have been approved all through."

Bhachu said they have installed catalytic converters that trap and regenerate heat back into the furnace. These converters, he said, have made it impossible for the company to lose gases through emissions.

"We have been here. We have over 1,000 permanent employees from the Reuben slum, and none of them has complained about anything," he said.

Throughout the interview, Bhachu denied all claims by residents about the emissions, saying he visits the plant every day from 2pm and 5pm and neither he nor his managers have seen or feared of such smoke.

This, however, contradicted our assessment, and multiple videos and images showing the heavy, choking smoke that escapes through the factory's walls instead of through the two existing chimneys, forcing residents to wear the area for

"I AM A MULTI-BILLION INVESTOR WITH ABOUT FIVE BANKS LENDING ME LOANS... I CANNOT LET SUCH SMALL ISSUES AFFECT SUCH AN INVESTMENT. I HAVE EMPLOYED THESE PEOPLE. I RUN A SCHOOL IN THEIR COMMUNITY. THIS IS HOW THEY WANT TO REPAY ME?"

several hours. Bhachu was agitated as he said, "I am a multi-billion investor with about five banks lending me loans to run these businesses. With the trailer assembly, steel milling and manufacturing of gas cylinders, I cannot let such small issues affect such an investment. Otherwise, even Nema, who's always tough on us, would not have issued the certificates."

He showed copies from the authority, certifying that Bhachu had met all environmental standards. However, upon asking for the copy from Accurate Steel Mills, Bhachu said he would only produce the certificate when he had official letters indicating why we needed to see it.

Bhachu demanded that we disclose who had led us with the information. "I have employed these people. I run a school in their community and do many things for them. This is how they want to repay me," he said.

So we wound up with two sides of the story: residents living with the effects of pollution that will affect them for years to come, and on the other hand, the company that denies all claims of polluting the environment.

Science through the data collected by the air sensors, shows which side is true. There are heavy pollutants in the air higher than the mandated Nema regulations for Particulate Matter.

Where is Nema in this? Where is the local government?

The reality is that the long-term effects of the air pollution that residents of Mukuru kwa Reuben are living under will feed into the greater cycle of poverty.

As people are unable to move due to the lack of affordable housing, they will be stuck with chronic respiratory diseases. Who speaks for the residents of Mukuru kwa Reuben?

Additional reporting by Naima Mungai with support of Code for Africa's sensors.Africa project and Africa Drone.

Medicine testing

- Fake or expired or otherwise unsafe medicines endanger 10,000s of the poorest across Africa.
- Chokers systematically tests medicines from pharmacies across Kenya, prompting the government recall of a widely used malaria medicine.
- The project is now being replicated in Tanzania and South Africa.

CHOKERS
Getting a grip on counterfeit medicine in Kenya

An ImpactAfrica project | Code for Africa | Business Daily | NMG

STORIES

REPORT A CASE



Have you ever bought fake medicine?

SURVEY

About this project

This project seeks to establish the prevalence of counterfeit medicine in three Kenyan cities to inform policies. The most frequently counterfeited medicines are expensive lifestyle medicines such as antibiotics, diabetics, hypertensives, hormones, analgesics, steroids and antihistamines. Medicines easily counterfeited include: fast-moving popular brands, easily manufactured drugs, over-the-counter prescriptions, supplies to government institutions and export products. The influx/prevalence of counterfeit medicines (cosmetics) in Kenya considering that counterfeits could cause death of patients or antibiotic resistance.

Objectives

- Spark public reaction through compelling stories
- Inform stringent measures on parallel importation of medicines
- Provoke society vigilance of possible fake, substandard or counterfeit medicines
- Determine effect of unauthorized production of medicine (counterfeiting) on the pharmaceutical distribution and retailing in three major cities in Kenya.

Operation ACIM – Action Against Counterfeit and Illicit Medicines

The field surveillance exercise dubbed Operation ACIM (Action against Counterfeit and Illicit Medicines) following the success of a similar exercise last September. Featuring 16 African customs administrations including Kenya, Operation ACIM simultaneously inspected cargo containers identified as likely to contain illicit or counterfeit pharmaceutical products posing a dangerous threat to local populations.

The biggest interceptions were in Nigeria, Benin, Kenya and Togo – in that order,” says WCO secretary-general Kunio Mikuriya. “All these potentially dangerous medicines to animal and human health have been withdrawn from the market instead of being sold to the African populations.”



Of the 113 million illicit and potentially dangerous medicines that got its way into the 60 African countries, most came through sea ports, showing legal loopholes by maritime authorities.



113 Million

Some 113 million illicit and potentially dangerous medicines were seized during the operation, with a total estimated value of €52 million (Sh6 billion).

Read More

or Follow the Story on Business Daily

Anti- Effective Agents

Cases Reported



Agent Type	Cases Reported
Anti-Bacterial	28
Anti-Fungal	2
Anti-Malarial	18

Anti- Effective Agents

Cases Reported



Agent Type	Cases Reported
Anti-Bacterial	28
Anti-Fungal	2
Anti-Malarial	18

Anti-Biotic

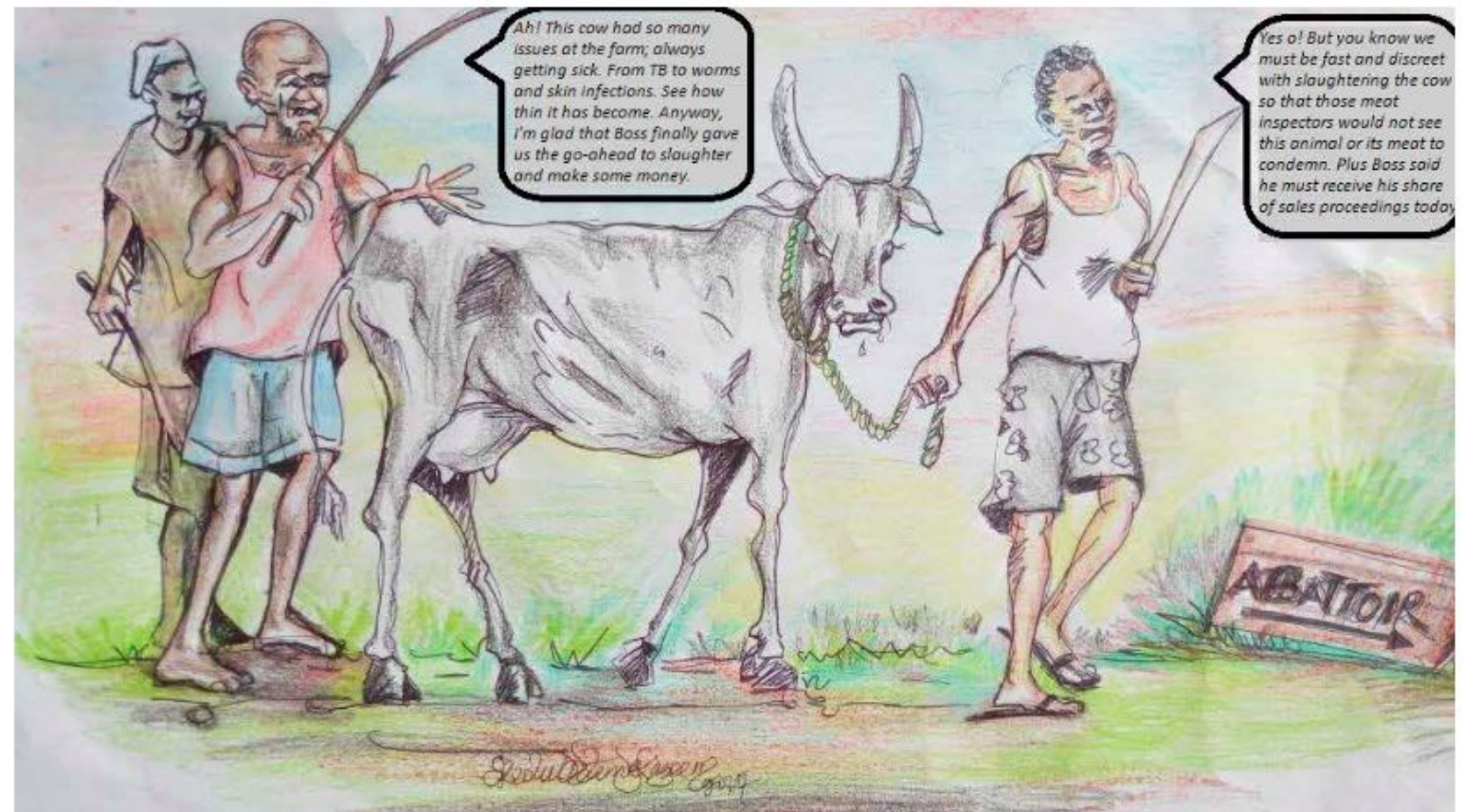
Anti-Malarial

Anti-Fungal

Dodgy meat

- Informal abattoirs supply meat to millions of Africans: but is it safe?
- Our pilot project in Lagos collected 5 to 7 meat samples daily, with lab tests confirming widespread contamination with bovine tuberculosis (TB) and up to 25% infected with worms.
- The project sparked health inspections / raids in Lagos.
- We're now replicating the project in Kenya & South Africa.

AN ABATTOIR STORY



Steal Our Stuff

Fast-track your project by tapping into our people + tools.



africanCOMMONS

Showcasing re-useable tools built across Africa and the people & organisations building them.

[Projects](#)[Organisations](#)[People](#)

Contribute

Add your project...

[+ Add Project](#)[+ Add Organization](#)

@Code4Africa

CfA Github: <http://bit.ly/CfAgithub>

CfA Slack: <http://bit.ly/C4Aslack>